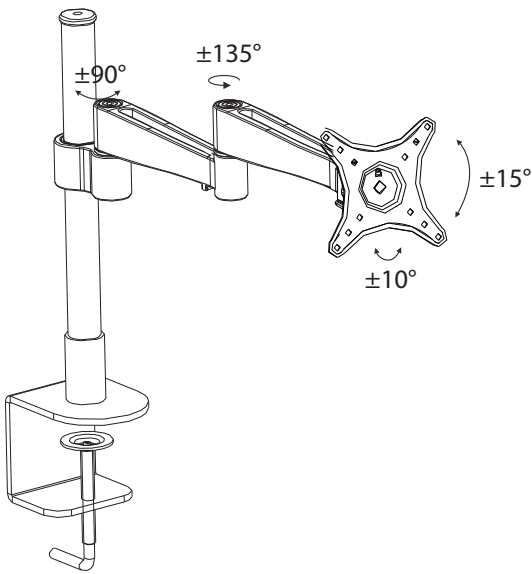


## General Warnings

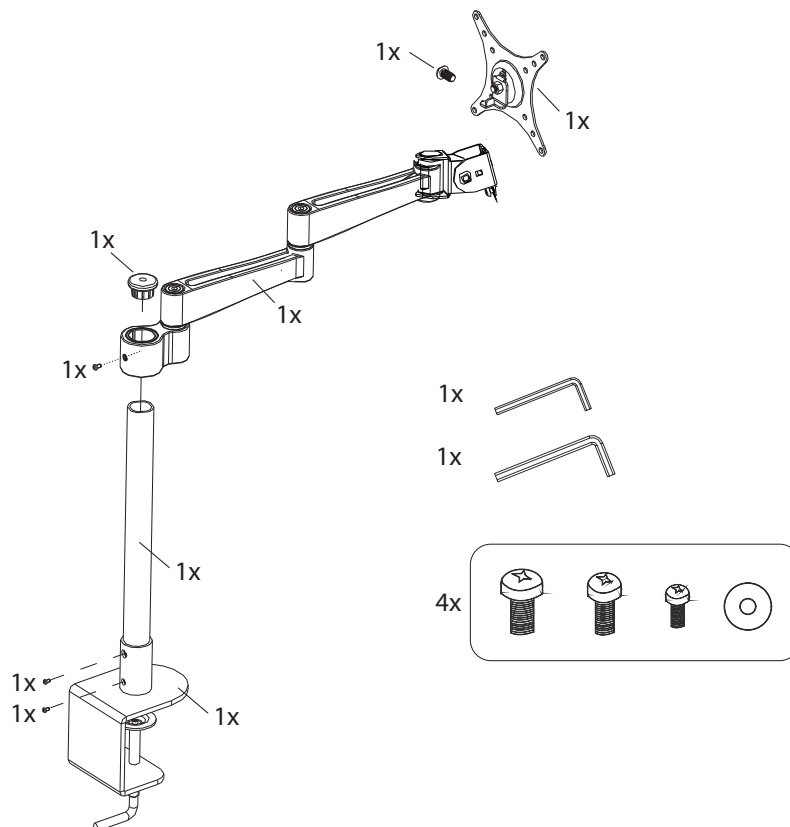
- ⚠ Promango is not responsible for any personal injury or product damage due to mishandling, incorrect mounting, incorrect assembly or incorrect use of the Promango monoView.
- ⚠ If you do not understand how to install the Promango monoView please ask an expert for help.
- ⚠ Do not force the screws and do not use electric drills to fasten the screws.

## Specifications



- Maximum load capacity: 12 kg
- Screen size range: 10" - 24"
- Maximum height: 40 cm
- Arm length: 39 cm
- Thickness of desk: 8 mm - 75 mm
- VESA: 50x50 / 75x75 / 100x100 mm
- Color: black and silver
- Angle adjustable

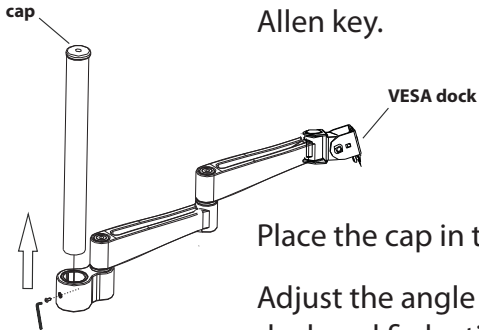
## Part list



### Assembly guide

1

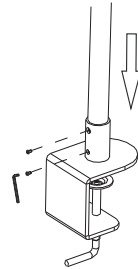
Slide the arm over the pole.  
Fix the position of the arm by tightening the screw with an Allen key.



Place the cap in the pole.  
Adjust the angle of the VESA dock and fix by tightening the screws with an Allen key.

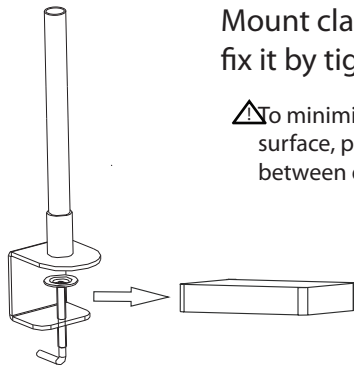
2

Assemble clamp and pole.  
Fasten pole with appropriate screws. Use Allen key to tighten.

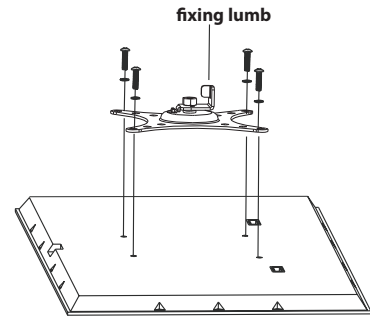


3

Mount clamp on the desk and fix it by tightening the bolt.  
⚠️ To minimise any damage to the desk surface, place pieces of cardboard between desk and clamp.

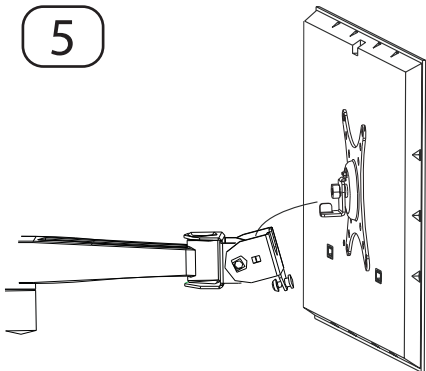


4



Place your monitor face-down on a flat surface.  
⚠️ Make sure you do not damage the screen.  
Align the holes of the VESA cross with the holes of the monitor. Make sure the fixing lumb is facing the bottom of the display.  
Secure the cross with four appropriate screws and tighten with a screwdriver (not provided).

5



Place the VESA cross in the VESA dock. Make sure the fixing lumb is pointing downwards.  
Tighten the screw on the VESA dock to secure the display.



For more information and other products visit us on [www.promango.com](http://www.promango.com).

© 2010 Promango - All rights reserved.